

## Clavos Installation

### *Important Notes re: Clavos Design and Installation to Achieve Desired Results*

Decorative Clavos are designed and manufactured to imitate old-style spikes, which are rustic and random.

To achieve the 'rustic' look, Clavos are produced with edges that are not perfectly straight.

To achieve the 'random' look, spike nails are welded on to the rear of the decorative clavos in a location that is  $\pm 1/8$ " from the centre. This deviation ensures the nail heads have a random placement upon installation.

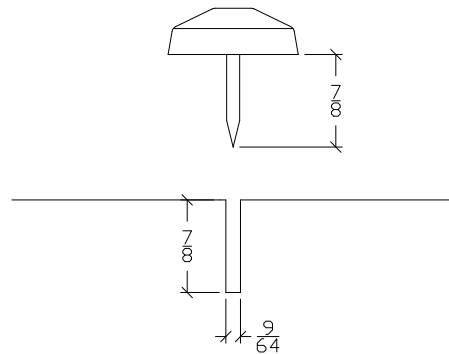
For some clients, this random placement is not desirable. **While perfect placement is not possible, to allow for the option of random placement, or a more uniform placement, BC Door recommends the following installation methods:**

### **No Factory Preparation (Client to do complete installation)**

1. Using a  $9/64$ " drill bit, pre-drill to a depth of  $7/8$ " in the desired installation location for the clavos spike nail.

The spike shank is  $1/8$ " diameter x  $7/8$ " long, so the  $9/64$ " pre-drilled hole allows for movement and final positioning before fully sealing the clavos into place.

2. BC Door recommends pre-finishing doors prior to proceeding to the final installation of clavos.
3. Fill the pre-drilled hole with construction adhesive / caulking, being careful not to overfill. This holds the clavos in place as well as adequately seals the lumber where the clavos are to be installed.
4. Rotate the clavos as desired within the  $9/64$ " pre-drilled hole; use a straight-edge to line up clavos points or edges as desired.



### **BC Door Factory Preparation (Pre-Drilled)**

1. Pre-finish the door prior to final installation of clavos.
2. Fill the pre-drilled hole with construction adhesive / caulking, being careful not to overfill. This holds the clavos in place as well as adequately seals the lumber where the clavos are to be installed.
3. Rotate the clavos as desired within the  $9/64$ " pre-drilled hole; use a straight-edge to line up clavos points or edges as desired.